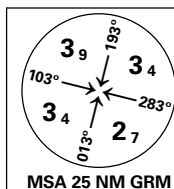
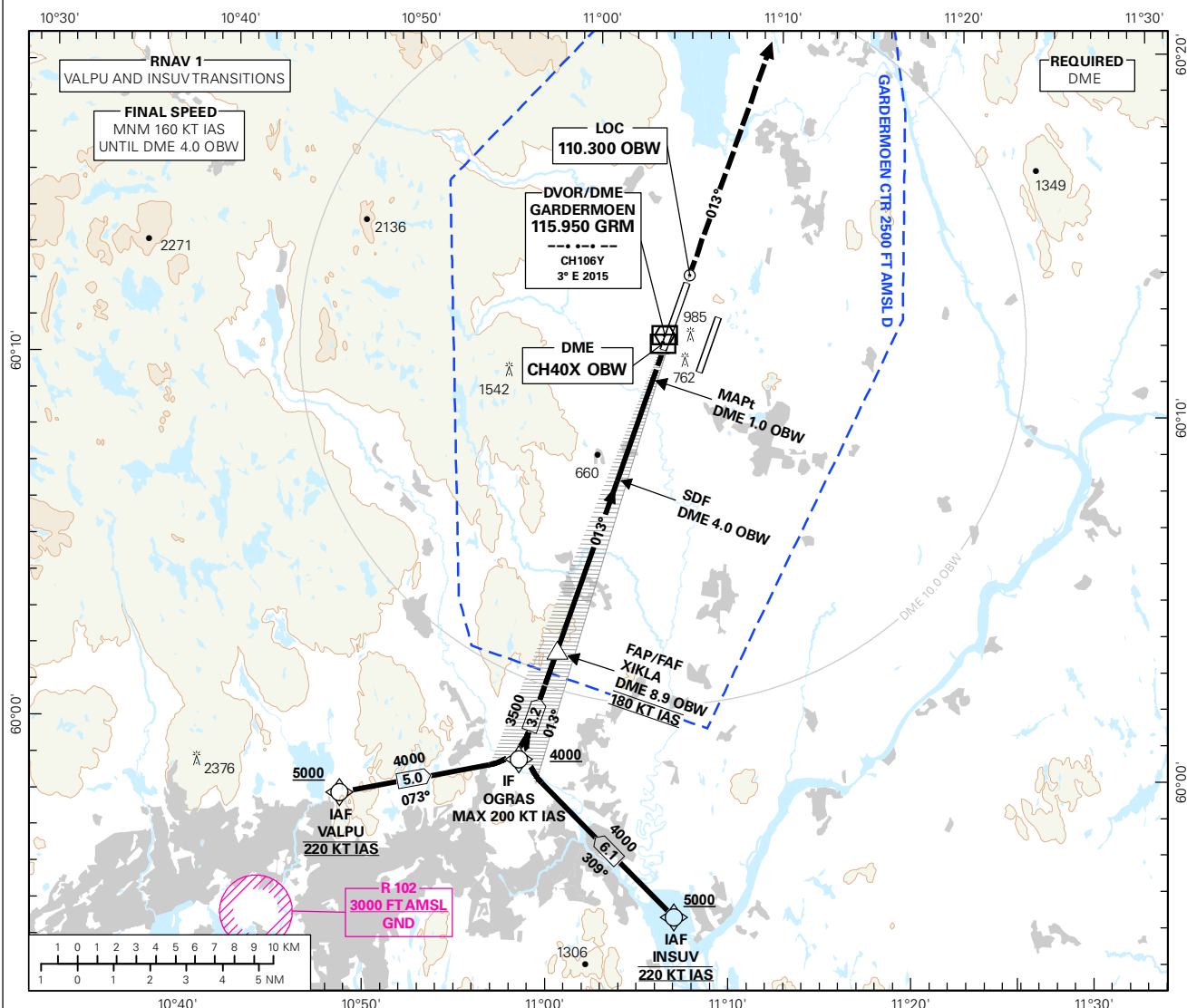


INSTRUMENT APPROACH CHART - ICAO PLAN VIEW SCALE: 1:350 000

OSLO

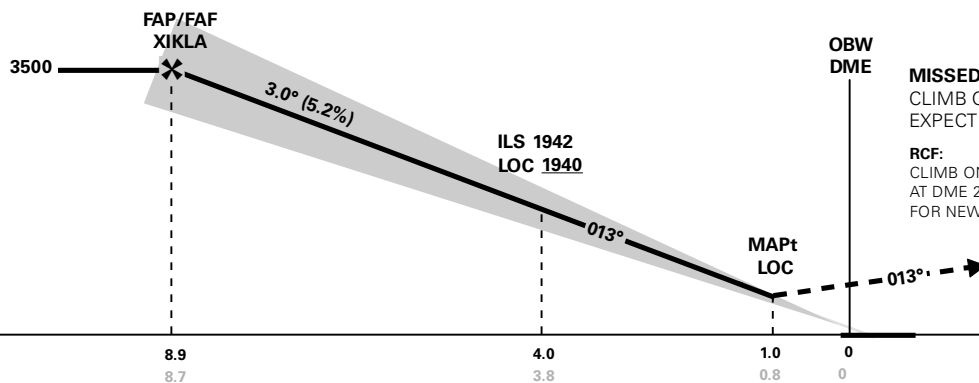
GARDERMOEN
ILS or LOC RWY 01LTRANSITION ALTITUDE
7000

ATIS: 126.125	AD ELEV: 681	
APP: 118.475 120.450	THR ELEV: 655	DIST IN NM
DIR: 136.400 (119.975)	HGT RELATED TO THR RWY 01L	ELEV, ALT AND HGT IN FT
FIN: 128.900	CIRCLING HGT RELATED TO AD ELEV	
TWR: 118.300 (118.700)	BEARINGS ARE MAGNETIC - VAR 2.8 ° E (2015)	
GND: 121.600		



DIST TO OBW	8	7	6	5	4	3	2	1
ALT (HGT)	3210 (2555)	2890 (2235)	2570 (1915)	2250 (1595)	1940 (1285)	1620 (965)	1300 (645)	980 (325)

ILS RDH 50



CAT OF ACFT	A	B	C	D	FINAL APCH	DIST FAF - MAPt: 7.9
OCA(H)	817 (162)	829 (174)	837 (182)	848 (193)		
STRAIGHT - IN	960 (305)				SPEED	KT 70 90 120 150 180
CIRCLING	1280 (599)		2040 (1359)	2250 (1569)	TIME	MIN:SEC 06:49 05:18 03:59 03:11 02:39
					ROD	FT/MIN 370 480 635 795 955

NOTE: CIRCLING W OF RWY ONLY.

CHANGES: SPEED RESTRICTIONS.

Avinor

17 SEP 2015

THIS PAGE INTENTIONALLY LEFT BLANK